

Asphalt Mixing Plant

Professional Asphalt Mixing Plant Manufacture

Company Profile

Haomei Machinery Equipment Co.,Ltd. has nearly 50 years of mechanical manufacturing and processing history, is a limited company that was founded by restructuring of China Construction Seventh Engineering Division Machinery Factory in 2005, and its predecessor is PLA Capital Construction Engineering Corps 21st Team Repairing and Manufacturing Factory. It is a member of the Road Construction Machinery Branch of China Highway Construction Association, and the largest road construction machinery manufacturer in Central and South China, mainly engaged in research & development, manufacturing and installation services of road construction and maintenance machinery, construction machinery and energy-saving and environmental friendly products, and also in lease and repair of construction machinery.

Since change of corps into labor in 1983, the company has always kept the work style of army, implemented militarized management mode, and owned a large group of operating and management personnel and engineering technical personnel who have comprehensive technologies, dare to struggle and are good at management, now it has more than 500 employees. The company's fixed assets are up to RMB120 million, and its cash flow is RMB180 million; it owns advanced machinery processing equipment such as Germany imported automatic cutting machine, automatic welding machine shape cutting machine tool and CNC machine tool, modern installation test site and complete after-sale service network. Its products are sole to 30 provinces, municipalities and autonomous regions in China and exported to South east Asia, etc., gaining good social reputation.

Adhering to the policy of "Technology Prospers and Quality Prospers", the company has gained above 20 scientific and technological achievement awards of provincial and ministerial level; in addition, it is the specialized manufacturer that researched and developed, and manufactured the primer-free multi-channel coal burning device firstly in China, and got the national patent. Its quality assurance system is ISO 9001:2008 approved, and the Company has been granted with "Contract-honoring & Faith-keeping Enterprise", "Excellent Enterprise of Quality Management", "National Creditable Unit" and "AAA Credit Enterprise" many times by

the province or municipality.



企业资质 >>>>
Enterprise qualification



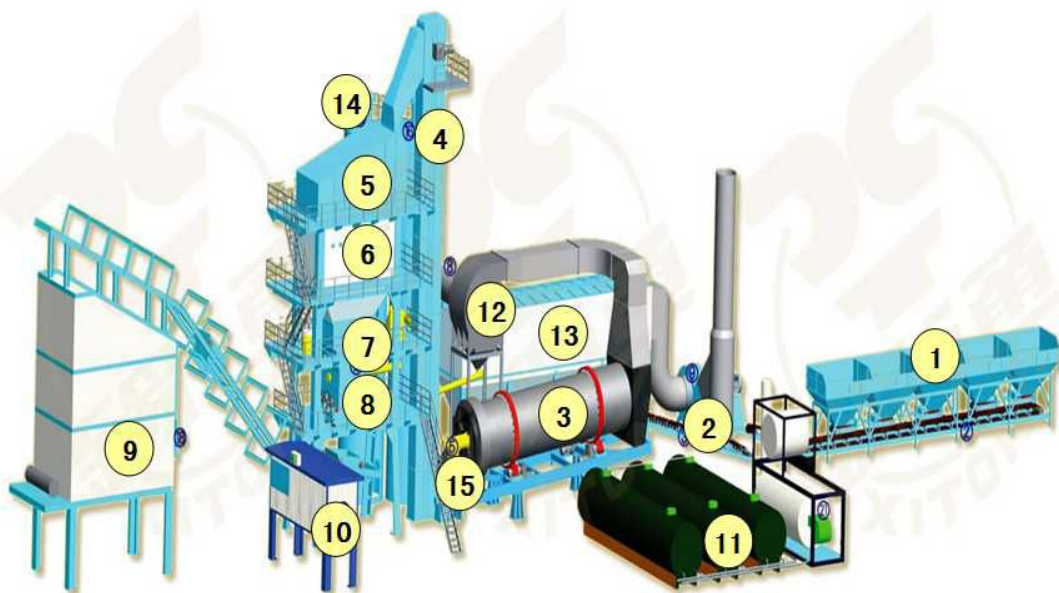
Successful Case



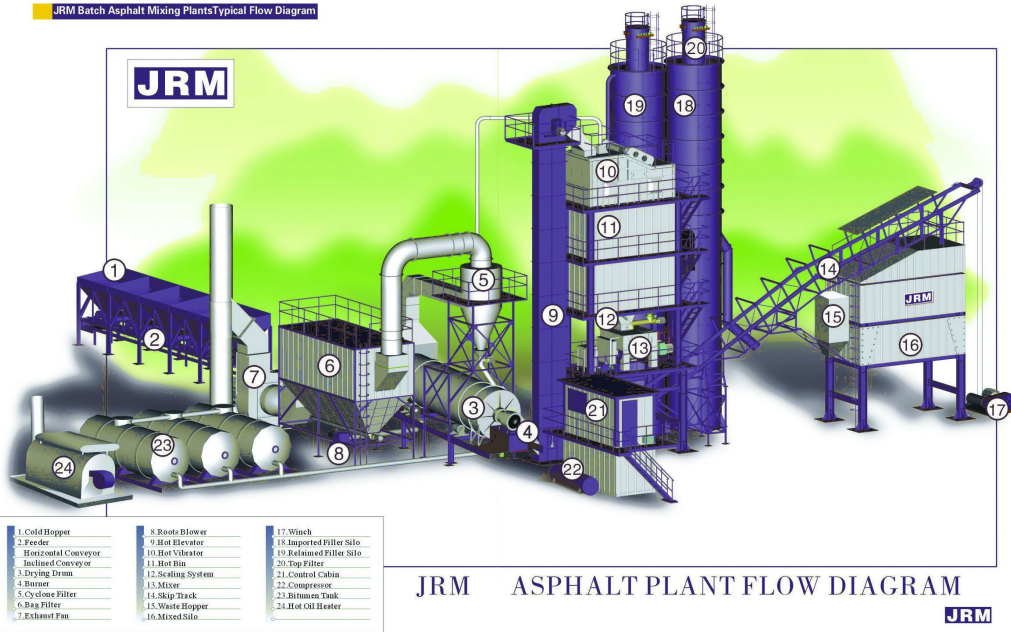
Stationary Asphalt Mixing Plant



Whole view of the plant



JRM Batch Asphalt Mixing Plants Typical Flow Diagram



LB 5000 Asphalt Mixing Plant



The HXB5000 forced asphalt mixing plant is independently researched, developed and designed by Ya-long based on summarizing years of experience in development and production and taking the advantages of domestic and oversea similar products under the premise of striving for improving the technical contents and service performance to fully meet the requirements of users. The design idea of the equipment is mainly reflected by “high efficiency, reliability, environmental protection, energy saving and beautiful appearance”; the unique design of double-horizontal-shaft mixer ensures the high-efficiency productivity; the control system has more powerful functions, more advanced performance, stability and reliability due to adoption of global well-known hardware systems in quantity; the indexes for environmental protection, such as dust and exhaust emission, noise control, etc., has reached

the global advanced level; the optimized thermo-motive design of the system utilizes the energy high-efficiently and reasonably, so that the energy loss is reduced to the minimum; the equipment has beautiful appearance, novel structure, compact layout, saved space, and convenient and rapid installation and transportation due to the integral modularized design, and it can completely meet the construction requirements for pavements of expressways, airports, ports, water conservancy, etc. at home and abroad.

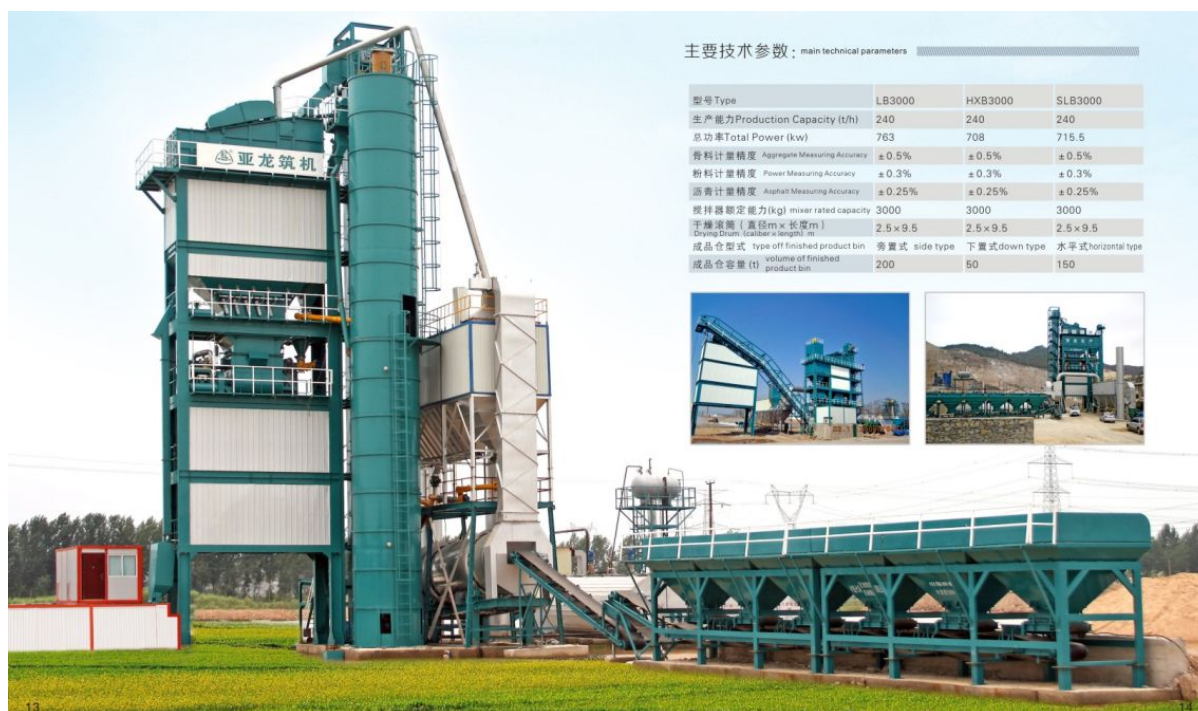
Type	Production Capacity(t/h)	Total Power	The Weighing Accuracy(%)			Mixer Rated Capacity	Drying Drum (Dia×Length)	Storage Bin Type	The Volume Of Storage Bin(T)
			Aggregate	Powder	Bitumen				
LB5000	400	1050	±0.5%	±0.3%	±0.25%	5000	3×12	Side/Down type	200

LB4000



Type	Production Capacity(t/h)	Total Power	The Weighing Accuracy(%)			Mixer Rated Capacity	Drying Drum (Dia×Length)	Storage Bin Type	The Volume Of Storage Bin(T)
			Aggregate	Powder	Bitumen				
LB4000	320	895	±0.5%	±0.3%	±0.25%	4000	2.8×11	Side/Down type	200

LB3000



主要技术参数: main technical parameters

型号 Type	LB3000	HXB3000	SLB3000
生产能力 Production Capacity (t/h)	240	240	240
总功率 Total Power (kw)	763	708	715.5
骨料计量精度 Aggregate Measuring Accuracy	±0.5%	±0.5%	±0.5%
粉料计量精度 Powder Measuring Accuracy	±0.3%	±0.3%	±0.3%
沥青计量精度 Asphalt Measuring Accuracy	±0.25%	±0.25%	±0.25%
搅拌机额定能力 (kg) mixer rated capacity	3000	3000	3000
干燥滚筒 (直径m×长度m) Drying Drum (dia×length) m	2.5×9.5	2.5×9.5	2.5×9.5
成品仓型式 type of finished product bin	旁置式 side type	下置式 down type	水平式 horizontal type
成品仓容量 (t) volume of finished product bin	200	50	150



Type	Production Capacity(t/h)	Total Power	The Weighing Accuracy(%)			Mixer Rated Capacity	Drying Drum (Dia×Length)	Storage Bin Type	The Volume Of Storage Bin(T)
			Aggregate	Powder	Bitumen				
LB3000	240	763	±0.5%	±0.3%	±0.25%	3000	2.5×9.5	Side/Down type	200

LB2000



Type	Production Capacity(t/h)	Total Power	The Weighing Accuracy(%)			Mixer Rated Capacity	Drying Drum (Dia×Len gth)	Storage Bin Type	The Volume Of Storage Bin(T)
			Aggregate	Powder	Bitumen				
LB2000	160	529.5	±0.5%	±0.3%	±0.25%	2000	2.2×8	Side/Down type	150

LB1000

Type	Production Capacity(t/h)	The Weighing Accuracy(%)			Mixer Rated Capacity	Drying Drum (Dia×Len gth)	Storage Bin Type	The Volume Of Storage Bin(T)
		Aggregate	Powder	Bitumen				
LB1000	80	±0.5%	±0.3%	±0.25%	1000	1.55 ×	Side/Do	80

					6.5	wn type	
--	--	--	--	--	-----	---------	--



LB500



Type	Production Capacity(t/h)	The Weighing Accuracy(%)			Mixer Rated Capacity	Drying Drum (Dia×Length)	Storage Bin Type	The Volume Of Storage Bin (T)
		Aggregate	Powder	Bitumen				
LB500	40	±0.5%	±0.3%	±0.25%	500	1.25 × 5.3	Side/Down type	40

Mobile Asphalt Mixing Plant

Model	Capacity(t/h)	Motor power (kw)	The Weighing Accuracy(%)			Way of dust filter	Dust emission	The type of storage	The volume of storage(T)
			Bitumen	Powder	aggregate				
LBY1000	80	230	+0.20	+0.25	+0.5	Bag dust filter	≤100	Side-type	60

LBY2000	160	440	+0.20	+0.25	+0.5	Bag dust filter	≤ 100	Side-type	100
---------	-----	-----	-------	-------	------	-----------------	------------	-----------	-----

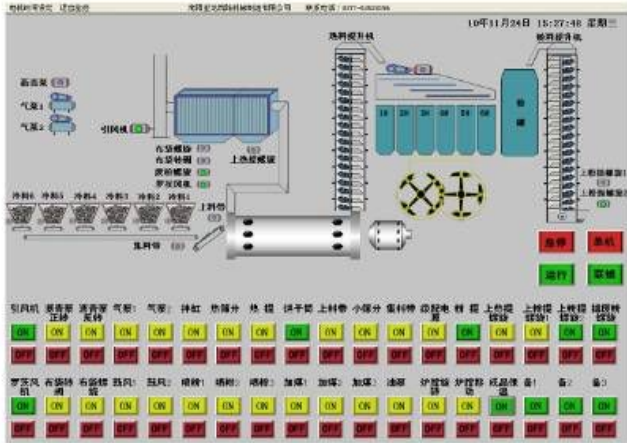
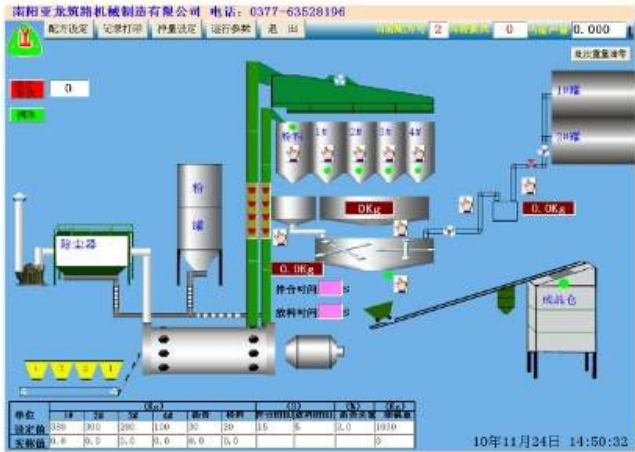


主要部分:

Asphalt mixture control system



- 1 Separated strong current and weak current
 - 2 A dual temperature cabinet air condition
 - 3 The room is insulated by rock wool
 - 4 Own R&D control system
 - 5 Imported PLC & weighing instrument
- Advanced computer control system**



Strong-current cabinet

- 1 Adopt the GGD cabinet conforming to the national standard
- 2 Source electric control units from Siemens
- 3 Orderly wiring, clear markers and convenient overhaul



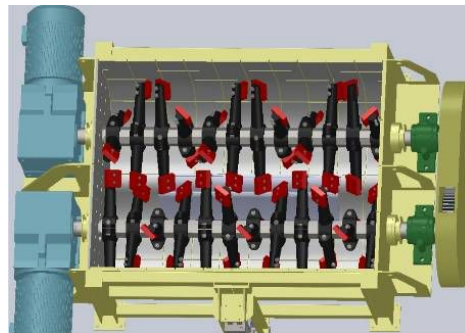
Environmental dust removal system

- 1 The bag filter from DuPont: NOMEX needled felt
- 2 Electronic pulse structure
- 3 Emission concentration of dust less than 50mg/Nm³



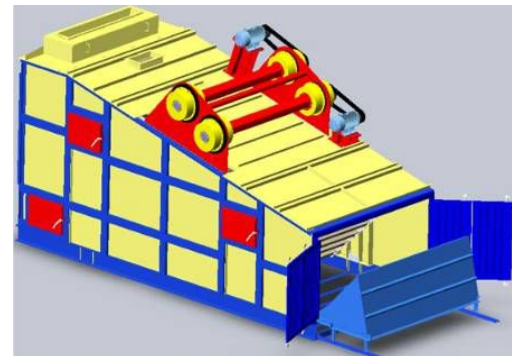
Dual-motor driven agitator

- 1 Wear resistance blade
- 2 A synchromesh gear
- 3 Horizontal Double-shaft



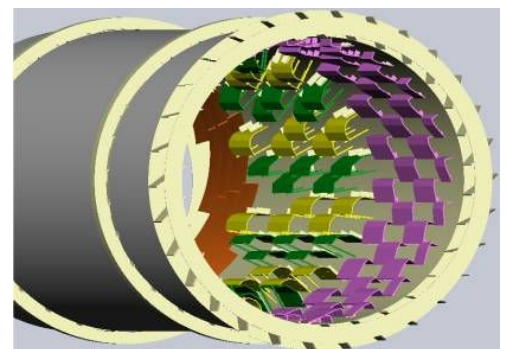
High-efficiency vibration screen

- 1 Driven by dual motors
- 2 Convenient maintenance
- 3 Vibrating shaft installed outside the housing of the vibrating screen
- 4 Movable slide board



Newly-designed drying system

- 1 Specially designed blades
- 2 With an insulating layer
- 3 Direct-coupled gear reducer driving through crosshead universal joint



Assemble And Serve

Lifelong service to exceed user expectation

Haomei's 10 Satisfactory Services

Freeing Customers from Worries

1. Ready to provide industry advisory;
2. Recommend to choose extensible models;
3. Plan the site construction;
4. Installation and debugging;
5. Train operators and maintenance staff;
6. Regular return visit;
7. Supply genuine accessories;
8. Guide equipment moving;
9. Equipment upgrade and modification;
10. Provide technical exchange and training every year.

Haomei is recognized by the industry with high-quality services while providing high-quality products for customers. The Company has a virtuous professional service team with skilled technologies, which is ready to provide high-quality services for users so as to meet the users' demands.

Facing market competition and social development, Haomei raises the service quality and level fully based on the starting point of "The Users' Benefit Takes The First Place", and has made service charters take "Life-long Follow-up Service" as core. Ya-long won good reputation by providing excellent services, and furthermore developed deep friendship with users. Many users sent the letters of thanks and silk banners to Ya-long. For those achievements, Haomei will provide more excellent services to return customers and society.